

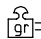



# Supporti fissi Serie M per i vari Diametri di Ruote Fixed forks of the M series for the various wheels diameters



Materiale: Lamiera ferro secondo standard EN 10130  
 Trattamento superficiale: Zincatura passivata UNI ISO 2081  
 Material: Iron sheet subject to EN 10130  
 Surface treatment: passivated galvanisation subject to UNI ISO 2081

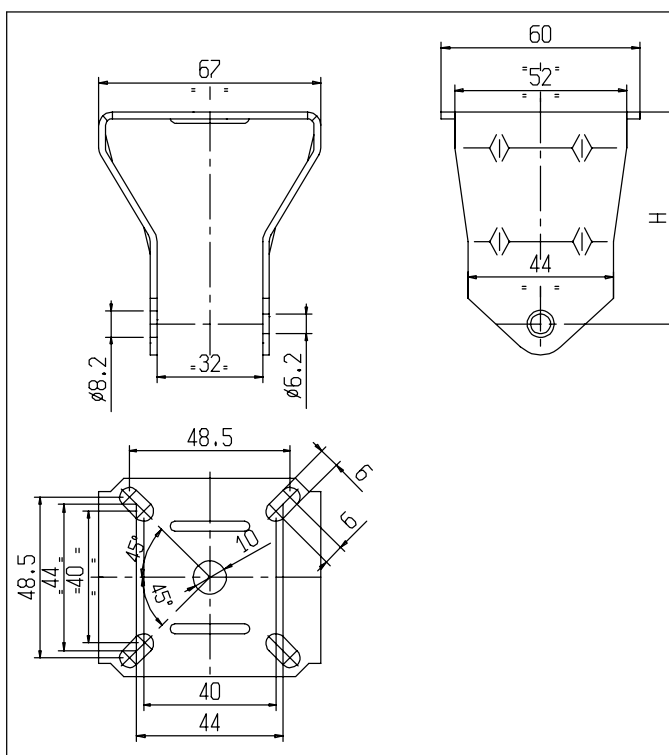
 S Portata statica conforme UNI EN 12527 \*

 S Static load capacity conform UNI EN 12527 \*

 =Peso per 1 pezzo

 =Weight for a piece

ITEM	50/M/SF	60/M/SF	75-80/M/SF	100/M/SF
H	47	52.5	63.5	72.5
 S	75	75	90	90
	131	143	154	160
code	8033	8038	2937	2938



\* La portata statica indicata per i soli supporti corrisponde a 1.5 portata dinamica verificata secondo UNI 12527 montando una ruota in Nylon

\* The static load capacity mentioned for the only forks correspond to 1.5 of dynamic load capacity checked according to UNI 12527 assembling with a nylon wheel