

# Compressivi fissi senza sfere serie 23/NFS

## Fixed castors without balls 23/NFS series

Requisiti dei Compressivi assemblati alle varie Ruote

Requirements of the castors assembled with the various wheels

Portata Dinamica conforme UNI EN 12527

Dynamic load capacity conform UNI EN 12527



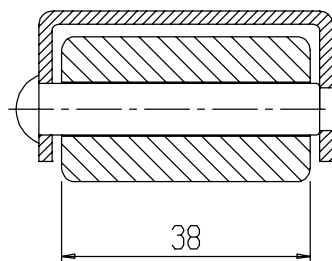
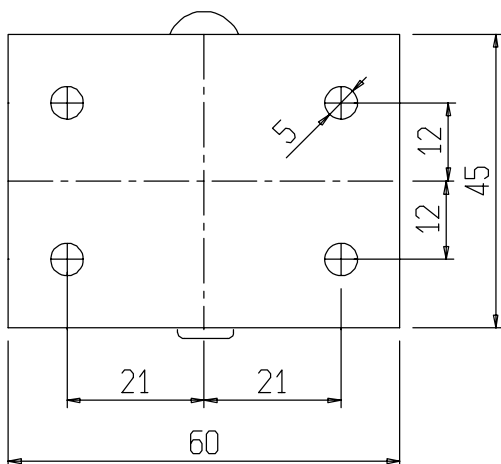
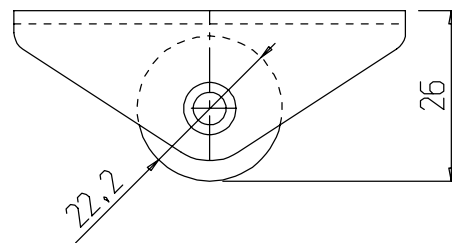
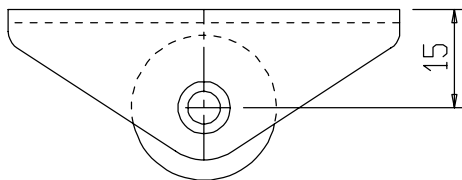
Portata Statica conforme UNI EN 12527

Static load capacity conform UNI EN 12527



= Peso per 1 pezzo

= Weight for a piece



|          |      |        |
|----------|------|--------|
| <p>N</p> | ITEM | 23/NFS |
|          |      | 80     |
|          |      | 120    |
|          |      | 93     |
|          | code | 1510   |