

Compressivi fissi serie 65/30 nelle varie tipologie di: Fissaggi, Ruote assemblati
 Fixed castors of the 65/30 series with different types of fixings, assembled wheels

Requisiti dei Compressivi assemblati alle varie Ruote

Requirements of the castors assembled with the different wheels

Portata Dinamica conforme UNI EN 12527

Portata Statica conforme UNI EN 12527

S

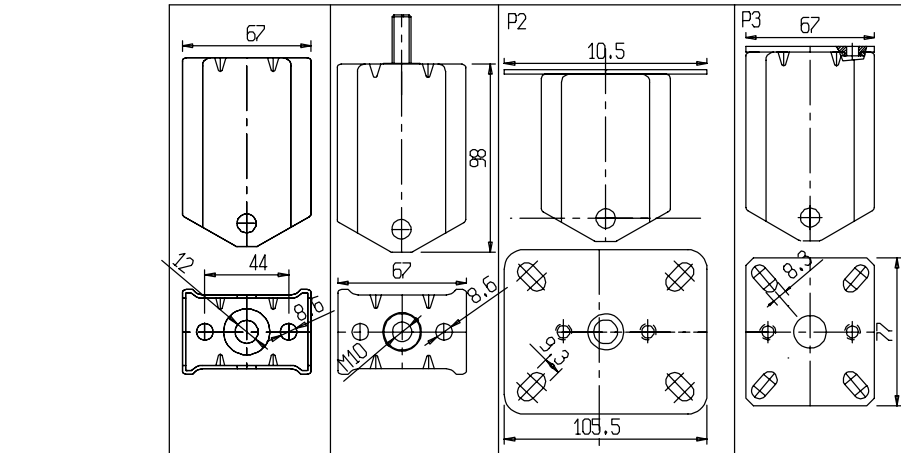
S

= Peso per 1 pezzo

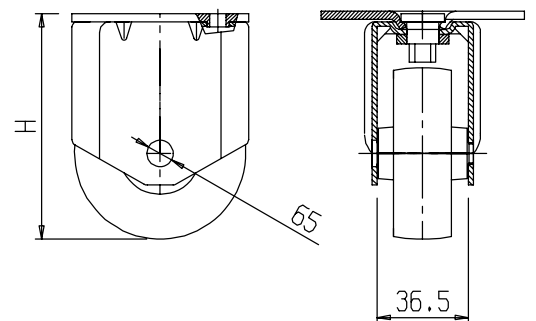
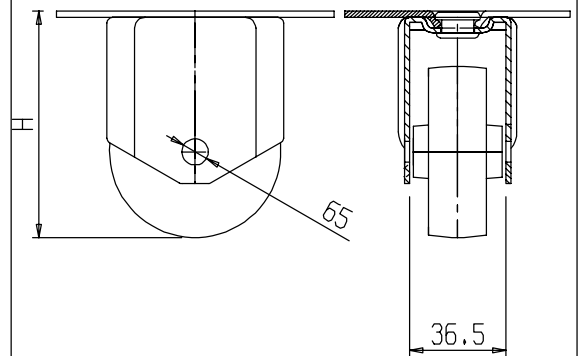
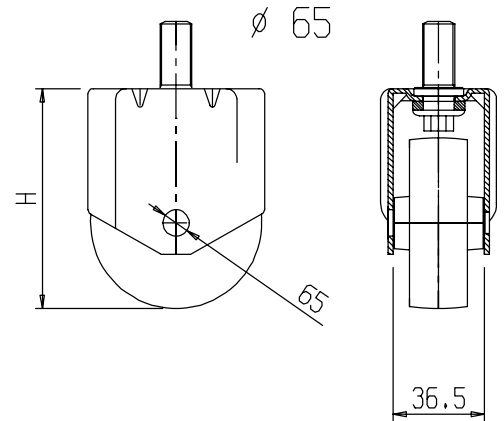
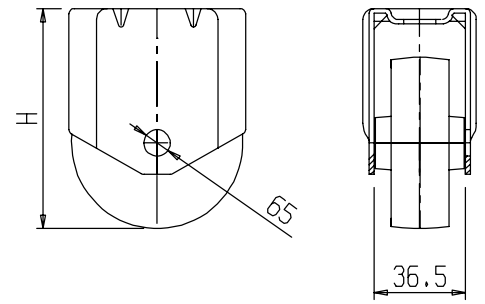
= Weight for a piece

Dynamic load capacity conform UNI EN 12527

Static load capacity conform UNI EN 12527



ITEM	65/30/SFN	65/30/SFFN	65/30/SFP2N	65/30/SFP3N
H	83.5	83.5	83.5	83.5
D	-	-	-	-
S	-	-	-	-
W	206	242	393	369
Code			5272	2297



ITEM	65/30SF/N
	con Asse a VITE
	With screw axle

Compressivi fissi serie 75/30 nelle varie tipologie di Fissaggi, Ruote assemblati

Fixed castors of the 75/30 series with different types of fixings, assembled wheels

Requisiti dei Compressivi assemblati alle varie Ruote

Requirements of the castors assembled with the different wheels

Portata Dinamica conforme UNI EN 12527



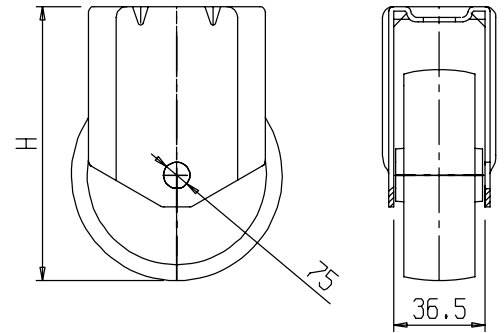
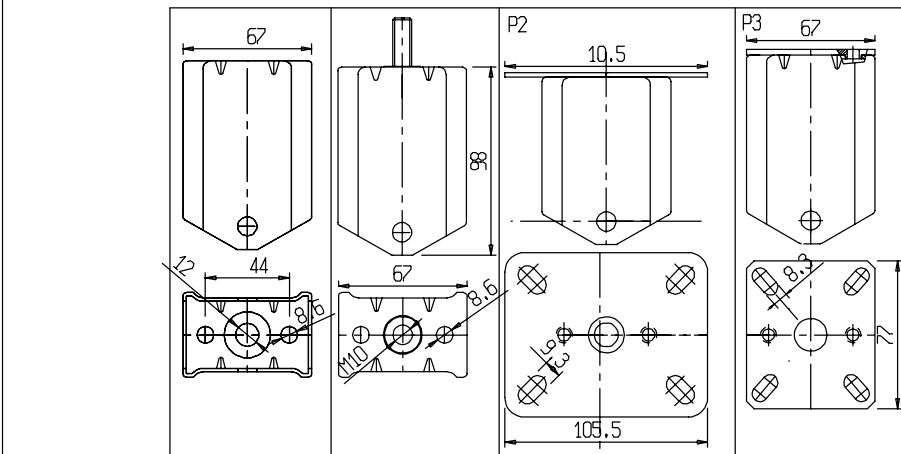
Portata Statica conforme UNI EN 12527



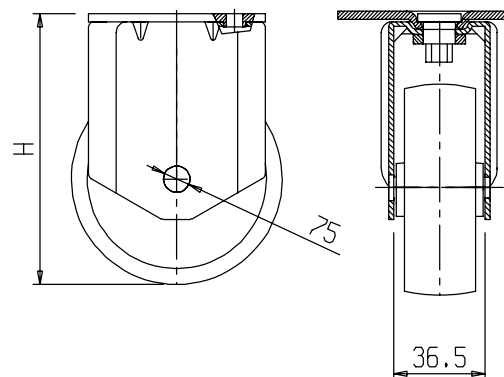
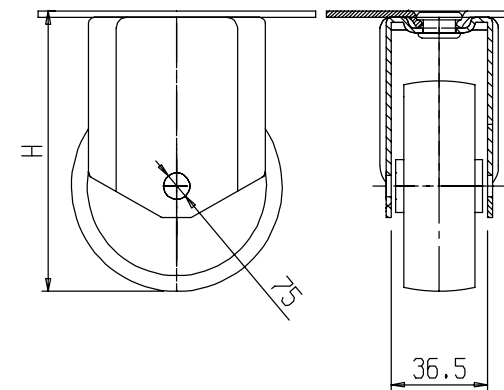
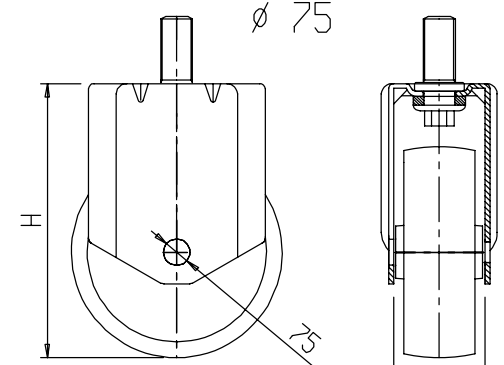
Peso per 1 pezzo Weight for a piece

Dynamic load capacity conform UNI EN 12527

Static load capacity conform UNI EN 12527



ITEM	75/30/SFG		75/30/SFFG		75/30/SFP2G		75/30/SFP3G	
	H	100.5	100.5	100.5	100.5	100.5	100.5	100.5
	70	70	70	70	70	70	70	70
	105	105	105	105	105	105	105	105
	292	328	479	455				
code							2539	
ITEM	75/30/SFGd		75/30/SFFGd		75/30/SFP2Gd		75/30/SFP3Gd	
	H	100.5	100.5	100.5	100.5	100.5	100.5	100.5
	70	70	70	70	70	70	70	
	105	105	105	105	105	105	105	
	343	379	330	306				
code		2869						
ITEM	75/30/SFGc		75/30/SFFGc		75/30/SFP2Gc		75/30/SFP3Gc	
	H	100.5	100.5	100.5	100.5	100.5	100.5	100.5
	70	70	70	70	70	70	70	
	105	105	105	105	105	105	105	
	380	416	567	543				
code	2555		2419	2544				
ITEM	75/30/SFGA		75/30/SFFGA		75/30/SFP2GA		75/30/SFP3GA	
	H	100.5	100.5	100.5	100.5	100.5	100.5	100.5
	-	-	-	-	-	-	-	
	-	-	-	-	-	-	-	
	-	-	-	-	-	-	-	
code								
ITEM	75/30/SFGcA		75/30/SFFGcA		75/30/SFP2GcA		75/30/SFP3GcA	
	H	100.5	100.5	100.5	100.5	100.5	100.5	100.5
	-	-	-	-	-	-	-	
	-	-	-	-	-	-	-	
	-	-	-	-	-	-	-	
code								
ITEM	75/30/SFN		75/30/SFFN		75/30/SFP2N		75/30/SFP3N	
	H	100.5	100.5	100.5	100.5	100.5	100.5	100.5
	-	-	-	-	-	-	-	
	-	-	-	-	-	-	-	
	244	280	431	407				
code			5273	5274				



ITEM	75/30SF/G-Gd-GA	ITEM	75/30SF/N	ITEM	75/30SF/G-Gd-Gc
	con Asse Rivettato With riveted axle		con Asse a Vite With screw axle		Nucleo Grigio Grey Centre

Compressivi fissi serie 80/30 nelle varie tipologie di: Fissaggi, Ruote assemblati

Fixed castors of the 80/30 series with different types of fixings, assembled wheels

Requisiti dei Compressivi assemblati alle varie Ruote

Requirements of the castors assembled with the different wheels

Portata Dinamica conforme UNI EN 12527



Dynamic load capacity conform UNI EN 12527

Portata Statica conforme UNI EN 12527



Static load capacity conform UNI EN 12527

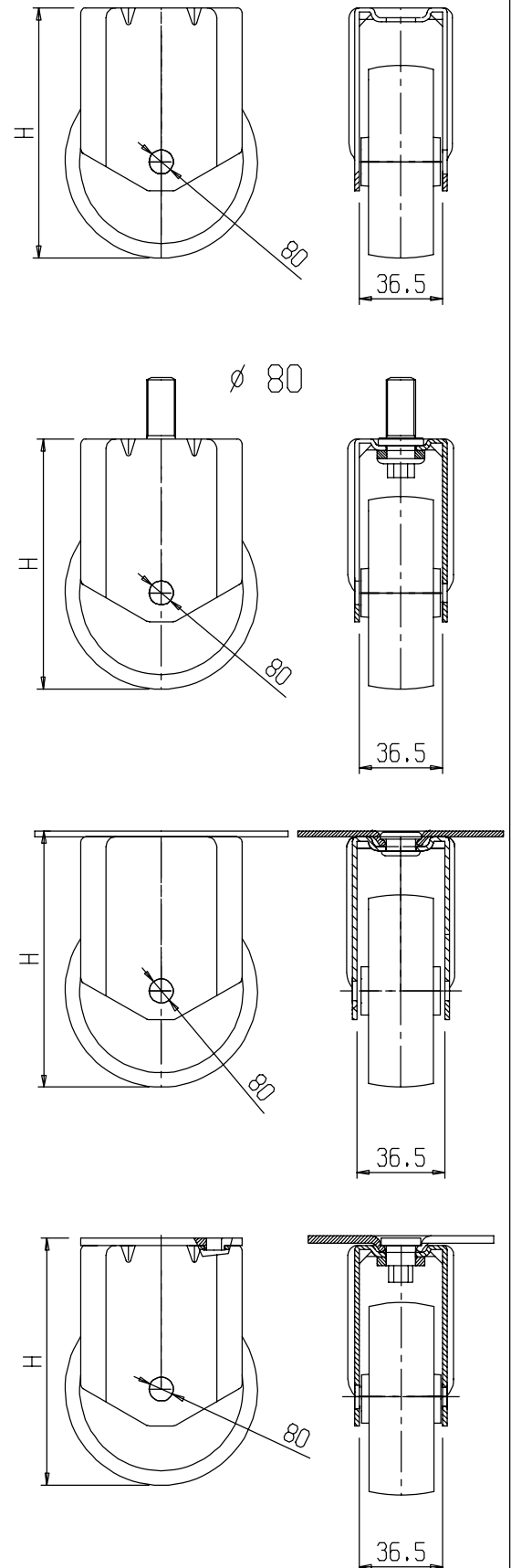


Peso per 1 pezzo



Weight for a piece

 80G	ITEM	80/30/SFG	80/30/SFFG	80/30/SFP2G	80/30/SFP3G
	H	103	103	103	103
		80	80	80	80
		120	120	120	120
		357	393	544	520
	code	4347	2413	4358	2868
 80Gd	ITEM	80/30/SFGd	80/30/SFFGd	80/30/SFP2Gd	80/30/SFP3Gd
	H	103	103	103	103
		80	80	80	80
		120	120	120	120
		408	444	595	571
	code	-	-	-	-
 80Gc	ITEM	80/30/SFGc	80/30/SFFGc	80/30/SFP2Gc	80/30/SFP3Gc
	H	103	103	103	103
		80	80	80	80
		120	120	120	120
		404	440	591	567
	code	-	-	-	2535
 80GA	ITEM	80/30/SFGA	80/30/SFFGA	80/30/SFP2GA	80/30/SFP3GA
	H	103	103	103	103
		-	-	-	-
		-	-	-	-
		-	-	-	-
	code	-	-	-	-
 80GcA	ITEM	80/30/SFGcA	80/30/SFFGcA	80/30/SFP2GcA	80/30/SFP3GcA
	H	103	103	103	103
		-	-	-	-
		-	-	-	-
		-	-	-	-
	code	-	-	-	-
 80N	ITEM	80/30/SFN	80/30/SFFN	80/30/SFP2N	80/30/SFP3N
	H	103	103	103	103
		-	-	-	-
		-	-	-	-
		256	292	443	419
	code	2410	-	2415	2148



ITEM	80/30SF/G-Gd-GA	ITEM	80/30SF/N	ITEM	80/30SF/G-Gd-Gc
	con Asse Rivettato With riveted axle		con Asse a Vite With screw axle		Nucleo Grigio Grey Centre

Compressivi fissi serie 100/30 nelle varie tipologie di: Fissaggi, Ruote assemblati

Fixed castors of the 100/30 series with different types of fixings, assembled wheels

Requisiti dei Compressivi assemblati alle varie Ruote
Requirements of the castors assembled with the different wheels

* Gli articoli evidenziati in colore verde sono in fase di allestimento.
* Articles written in green colour are in course of preparation.

Portata Dinamica conforme UNI EN 12527
Dynamic load capacity conform UNI EN 12527



Portata Statica conforme UNI EN 12527
Static load capacity conform UNI EN 12527



Peso per 1 pezzo Weight for a piece

		D	S	=	=

Compressivi fissi serie 125/30 nelle varie tipologie di: Fissaggi, Ruote assemblati Fixed castors of the 125/30 series with different types of fixings, assembled wheels

Requisiti dei Compressivi assemblati alle varie Ruote

Requirements of the castors assembled with the different wheels

Portata Dinamica conforme UNI EN 12527

Portata Statica conforme UNI EN 12527

Dynamic load capacity conform UNI EN 12527

Static load capacity conform UNI EN 12527



Peso per 1 pezzo



Weight for a piece

125G	ITEM	125/30/SFG	125/30/SFFG	125/30/SFP2G	125/30/SFP3G
	H	150	150	150	150
		90	90	90	90
		135	135	135	135
		607	643	783	730
	code	2416		4364	2418
125Gd	ITEM	125/30/SFGd	125/30/SFFGd	125/30/SFP2Gd	125/30/SFP3Gd
	H	150	150	150	150
		90	90	90	90
		135	135	135	135
		666	702	842	789
	code			2320	2540
125Gc	ITEM	125/30/SFGc	125/30/SFFGc	125/30/SFP2Gc	125/30/SFP3Gc
	H	150	150	150	150
		90	90	90	90
		135	135	135	135
		688	724	864	811
	code	2566	-	2835	2426
125GA	ITEM	125/30/SFGA	125/30/SFFGA	125/30/SFP2GA	125/30/SFP3GA
	H	150	150	150	150
		-	-	-	-
		-	-	-	-
		-	-	-	-
	code				
125GcA	ITEM	125/30/SFGcA	125/30/SFFGcA	125/30/SFP2GcA	125/30/SFP3GcA
	H	150	150	150	150
		-	-	-	-
		-	-	-	-
		-	-	-	-
	code				
125SR	ITEM	125/30/SFSR	125/30/SFFSR	125/30/SFP2SR	125/30/SFP3SR
	H	150	150	150	150
		-	-	-	-
		-	-	-	-
		-	-	-	-
	code				
125SRd	ITEM	125/30/SFSRd	125/30/SFFSRd	125/30/SFP2SRd	125/30/SFP3SRd
	H	150	150	150	150
		-	-	-	-
		-	-	-	-
		-	-	-	-
	code				
125N	ITEM	125/30/SFN	125/30/SFFN	125/30/SFP2N	125/30/SFP3N
	H	150	150	150	150
		-	-	-	-
		-	-	-	-
		393	429	569	516
	code	2420		5271	2421
ITEM	125/30SF/G-Gd-GA-SR-SRd	ITEM	125/30SF/N	ITEM	125/30SF/G-Gd-Gc
	con Asse Rivettato With riveted axle		con Asse a Vite With screw axle		Nucleo Grigio Grey Centre

