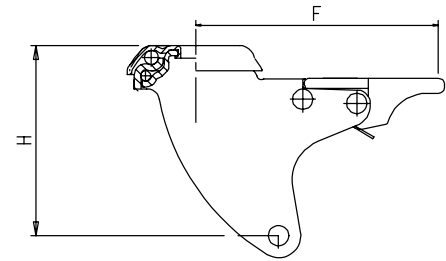


Supporti girevoli con freno serie 30FT per i vari Diametri di Ruote e Gamma di Fissaggi
Swivel forks with brake of the 30FT series for the various wheels diameters and fixings range

Materiale: Lamiera ferro secondo standard EN 10130
Trattamento superficiale: Zincatura passivata UNI ISO 2081
Corona sfere superiore: n. 17 sfere 1/4" ingrassate
Corona sfere inferiore: n. 30 sfere 5/32" ingrassate
Material: Iron sheet subject to EN 10130
Surface treatment: passivated galvanisation subject to UNI ISO 2081
Upper ball crown N. 17 greased balls 1/4
Lower ball crown N. 30 greased balls 5/32



S Portata Statica conforme UNI EN 12527 *
 S Static load capacity conform UNI EN 12527 *

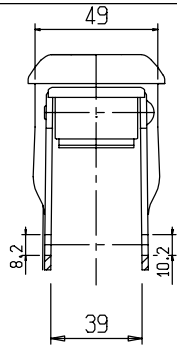


	B10	B12	B13	F	P1 60x60	P2 105x85	P3 77x67
= Peso per 1 pezzo = Weight for a piece							
ITEM	75/30FT/B10	75/30FT/B12	75/30FT/B13	75/30FT/F	75/30FT/P1	75/30FT/P2	75/30FT/P3
H	64.5	64.5	64.5	64.5	64.5	64.5	64.5
F	96.5	96.5	96.5	96.5	96.5	96.5	96.5
S	75	75	75	75	75	75	75
	-	-	-	-	-	-	-
code	2143	2096				2101	2077
ITEM	80/30FT/B10	80/30FT/B12	80/30FT/B13	80/30FT/F	80/30FT/P1	80/30FT/P2	80/30FT/P3
H	64.5	64.5	64.5	64.5	64.5	64.5	64.5
F	96.5	96.5	96.5	96.5	96.5	96.5	96.5
S	75	75	75	75	75	75	75
	-	-	-	-	-	-	-
code	2556	2543		2146	2202	2141	
ITEM	100/30FT/B10	100/30FT/B12	100/30FT/B13	100/30FT/F	100/30FT/P1	100/30FT/P2	100/30FT/P23
H	74	74	74	74	74	74	74
F	99.5	99.5	99.5	99.5	99.5	99.5	99.5
S	75	75	75	75	75	75	75
	315	315	315	342	343	-	-
code	2059	2098		2028	2046	2844	1910
ITEM	125/30FT/B10	125/30FT/B12	125/30FT/B13	125/30FT/F	125/30FT/P1	125/30FT/P2	125/30FT/P3
H	87.5	87.5	87.5	87.5	87.5	87.5	87.5
F	110	110	110	110	110	110	110
S	-	-	-	-	-	-	-
	326	326	326	355	355	-	-
code	2083	2076		2029	2097	2089	2045

* La portata statica indicata per i soli supporti corrisponde a 1.5 portata dinamica verificata secondo UNI 12527 montando una ruota in Nylon

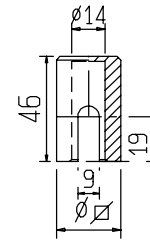
* The static load capacity mentioned for the only forks correspond to 1.5 of dynamic load capacity checked according to UNI 12527 assembling with a nylon wheel

Supporti girevoli con freno serie 30FT per i vari Diametri di Ruote e Gamma di Fissaggi
 Swivel forks with brake of the 30FT series for the various wheels diameters and fixings range



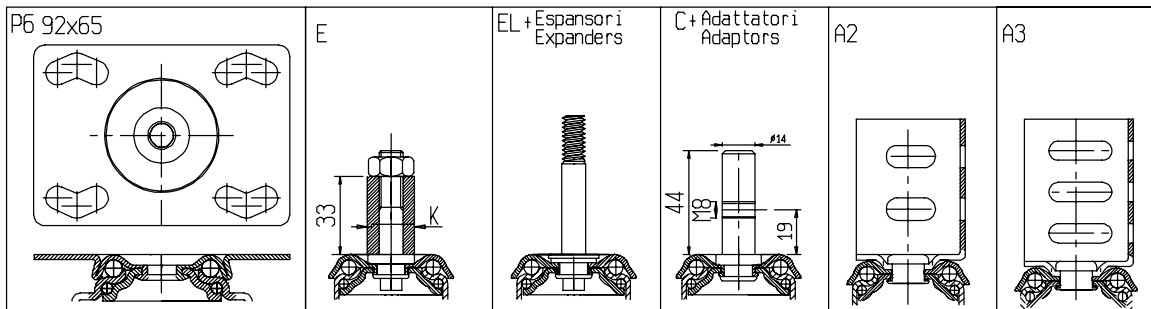
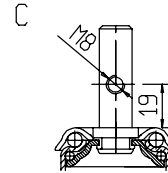
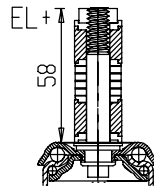
Espansori Expanders

	∅ 18	19	22	25	28
EL +					
	∇ 21	26	31	-	-
EL +					



Adattatori Adaptors

	∅ 18	19	22	25	28
∇	21	26	31		



	P6 92x65	E	EL+ Expansori	C+ Adattatori	A2	A3
ITEM	75/30FT/P6	75/30FT/E	75/30FT/EL	75/30FT/C	75/30FT/A2	75/30FT/A3
H	64.5	64.5	64.5	64.5	64.5	64.5
F	96.5	96.5	96.5	96.5	96.5	96.5
S	75	75	75	75	75	75
	359	339	357	348	375	379
code						
ITEM	80/30FT/P6	80/30FT/E	80/30FT/EL	80/30FT/C	80/30FT/A2	80/30FT/A3
H	64.5	64.5	64.5	64.5	64.5	64.5
F	96.5	96.5	96.5	96.5	96.5	96.5
S	75	75	75	75	75	75
	359	339	357	348	375	379
code						
ITEM	100/30FT/P6	100/30FT/E	100/30FT/EL	100/30FT/C	100/30FT/A2	100/30FT/A3
H	74	74	74	74	74	74
F	99.5	99.5	99.5	99.5	99.5	99.5
S	75	75	75	75	75	75
	386	344	354	378	402	406
code						
ITEM	125/30FT/P6	125/30FT/E	125/30FT/EL	125/30FT/C	125/30FT/A2	125/30FT/A3
H	87.5	87.5	87.5	87.5	87.5	87.5
F	110	110	110	110	110	110
S	-	-	-	-	-	-
	398	378	388	389	413	417
code		2258				

* Gli articoli evidenziati in colore verde sono in fase di allestimento.

* Articles written in green colour are in course of preparation.