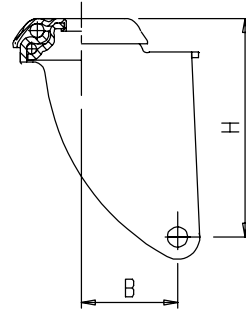


Supporti girevoli Serie 30 per i vari Diametri di Ruote e Gamma di Fissaggi Swivel forks of the 30 series for the various wheels diameters and fixings range

Materiale: Lamiera ferro secondo standard EN 10130
 Trattamento superficiale: Zincatura passivata UNI ISO 2081
 Corona sfere superiore: n. 17 sfere 1/4" ingrassate
 Corona sfere inferiore: n. 30 sfere 5/32" ingrassate
 Material: Iron sheet subject to EN 10130
 Surface treatment: passivated galvanisation subject to UNI ISO 2081
 Upper ball crown N. 17 greased balls 1/4
 Lower ball crown N. 30 greased balls 5/32



Portata Statica conforme UNI EN 12527 *
 Static load capacity conform UNI EN 12527 *

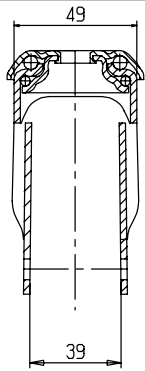
= Peso per 1 pezzo
 = Weight for a piece

	B10	B12	B13	F	P1 60x60	P2 105x85	P3 77x67
ITEM	65/30/B10	65/30/B12	65/30/B13	65/30/F	65/30/P1	65/30/P2	65/30/P3
H	51	51	51	51	51	51	51
B	17.5	17.5	17.5	17.5	17.5	17.5	17.5
	-	-	-	-	-	-	-
	210	210	210	236	239	-	257
code							
ITEM	75-80/30/B10	75-80/30/B12	75-80/30/B13	75-80/30/F	75-80/30/P1	75-80/30/P2	75-80/30/P3
H	63	63	63	63	63	63	63
B	26	26	26	26	26	26	26
	75	75	75	75	75	75	75
	221	221	221	247	250	-	268
code	2048	2043		2052	2053	2051	2866
ITEM	100/30/B10	100/30/B12	100/30/B13	100/30/F	100/30/P1	100/30/P2	100/30/P23
H	74	74	74	74	74	74	74
B	28.5	28.5	28.5	28.5	28.5	28.5	28.5
	75	75	75	75	75	75	75
	240	240	240	266	269	-	287
code	2061	2065		2062	2063	2082	1909
ITEM	125/30/B10	125/30/B12	125/30/B13	125/30/F	125/30/P1	125/30/P2	125/30/P3
H	87.5	87.5	87.5	87.5	87.5	87.5	87.5
B	37	37	37	37	37	37	37
	-	-	-	-	-	-	-
	258	258	258	287	290	-	308
code	2071	2075		2298	2073	2088	2561

* La portata statica indicata per i soli supporti corrisponde a 1.5 portata dinamica verificata secondo UNI 12527 montando una ruota in Nylon

* The static load capacity mentioned for the only forks correspond to 1.5 of dynamic load capacity checked according to UNI 12527 assembling with a nylon wheel

Supporti girevoli Serie 30 per i vari Diametri di Ruote e Gamma di Fissaggi
Swivel forks of the 30 series for the various wheels diameters and fixings range

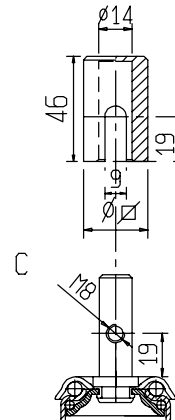
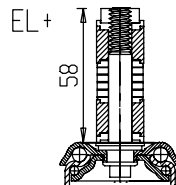


Espansori Expanders

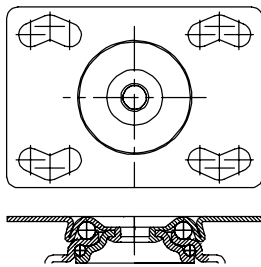
	∅	18	19	22	25	28
EL+						
	∇	21	26	31	-	-
EL+						

Adattatori Adaptors

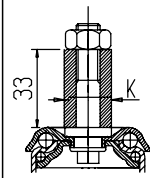
	∅	18	19	22	25	28
	∇	21	26	31		



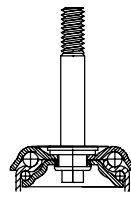
P6 92x65



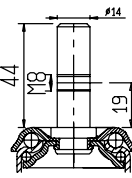
E



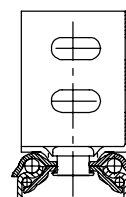
EL+ Espansori Expanders



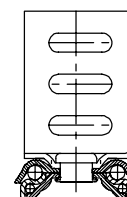
C+ Adattatori Adaptors



A2



A3



ITEM	65/30/P6	65/30/E	65/30/EL	65/30/C	65/30/A2	65/30/A3
H	51	51	51	51	51	51
B	17.5	17.5	17.5	17.5	17.5	17.5
S	-	-	-	-	-	-
T	282	248	228	273	297	293
code						
ITEM	75-80/30/P6	75-80/30/E	75-80/30/EL	75-80/30/C	75-80/30/A2	75-80/30/A3
H	63	63	63	63	63	63
B	26	26	26	26	26	26
S	75	75	75	75	75	75
T	293	259	269	284	308	304
code		2054				
ITEM	100/30/P6	100/30/E	100/30/EL	100/30/C	100/30/A2	100/30/A3
H	74	74	74	74	74	74
B	28.5	28.5	28.5	28.5	28.5	28.5
S	75	75	75	75	75	75
T	312	278	288	303	327	323
code		2064				
ITEM	125/30/P6	125/30/E	125/30/EL	125/30/C	125/30/A2	125/30/A3
H	87.5	87.5	87.5	87.5	87.5	87.5
B	37	37	37	37	37	37
S	-	-	-	-	-	-
T	333	310	320	321	345	341
code		2074				

* Gli articoli evidenziati in colore verde sono in fase di allestimento.

* Articles written in green colour are in course of preparation.